

### Keynote Legend

Key Value	Keynote Text
DW 01	1 1/4" CW TO DW RISER, 3-A1 UNITS OR 3-A2 UNITS OR 1-A1TA UNIT (L1) & 2-A1 UNITS (L2-L3), (43.5 FU), L1-L3
DW 02	1 1/4" CW TO DW RISER, 3-A3a UNITS, (52.5 FU), L1-L3
DW 03	1 1/2" CW TO DW RISER, 1-B1a UNIT (L1) & 2-B1b UNITS (L2-L3) OR 1-B1b UNIT (L1) & 2-B1a UNITS (L2-L3) OR 1-B4 UNIT (L1) & 2-B4a UNITS (L2-L3) OR 2-B2a UNITS (L1-L2) & 1-B2b UNIT (L3), (60 FU), L1-L3

3" Dia CW Pipe	20.9 FT
3" Dia CW Pipe Tee	2.0 EA
3" Dia CW Pipe 90 Deg Elbow	2.0 EA
3" Dia Cut-Off Valve, NIBCO	1.0 EA
3" Dia PRV, Pressure Reducing Valve, WATTS LFN223F	1.0 EA
3/4" Dia Frost Proof Hose Bibb	6.0 EA

### GENERAL DOMESTIC WATER NOTES

- ALL DOMESTIC WATER PIPING SHALL BE ROUTED ABOVE CONDITIONED SPACE. HORIZONTAL BUILDING DISTRIBUTION SHALL BE ROUTED ABOVE 4TH & 5TH FLOOR CEILINGS. REFER TO DETAILS FOR UNCONDITIONED CORRIDOR/BREEZEWAY CROSSINGS.
- NO JOINTS BELOW SLAB. 2" MINIMUM WASTE AND VENT BELOW SLAB.
- PLUMBING CONTRACTOR SHALL VERIFY THE LOCATION OF ALL UTILITY CONNECTIONS WITH CIVIL ENGINEERS PLANS PRIOR TO THE START OF WORK.
- PLUMBING CONTRACTOR SHALL VERIFY THE LOCATION OF ALL ACCESSIBLE AND/OR HANDICAP DWELLING UNITS WITH ARCHITECTURAL DRAWINGS AND ADJUST ACCORDINGLY.
- ALL UNIONS, VALVES, EQUIPMENT AND SERVICEABLE PLUMBING SYSTEM COMPONENTS SHALL BE READILY ACCESSIBLE.
- INSULATE ALL DOMESTIC WATER PIPING AS REQUIRED BY LOCAL CODE.
- PROVIDE WATER HAMMER ARRESTERS FOR ALL FAST-CLOSING AND ELECTRONIC VALVES PER LOCAL PLUMBING CODE.



www.MEPDeltaDesign.com

MEP CONSULTANT- MEP DELTA DESIGN  
PO BOX 81271  
AUSTIN TX, 78718  
(512) 215-9792

ARCHITECT - MEERS & PARTNERS  
1600 MEMORIAL DR # 100  
HOUSTON, TX 77079  
(281) 558-8787

STRUCTURAL - INTEGRITY STRUCTURAL  
12777 JONES ROAD  
HOUSTON TX, 77070  
(281) 894-7099 - Ext. 124

CIVIL ENGINEER - KIMLEY-HORN  
5301 SOUTHWEST PARKWAY, UPLANDS II, SUITE 100  
AUSTIN, TX 78735  
(512) 518-6534

#### ISSUANCES

NO.	DESCRIPTION	DATE
01	50% DD Set	05/19/2023
02	100% DD Set	06/26/2023
03	Permit Set	11/16/2023
04	Issue For GMP	02/20/2024

#### REVISIONS

NO.	DESCRIPTION	DATE
1	GMP	02/15/2024

FIRM # F-15941



### Big Valley Apartments

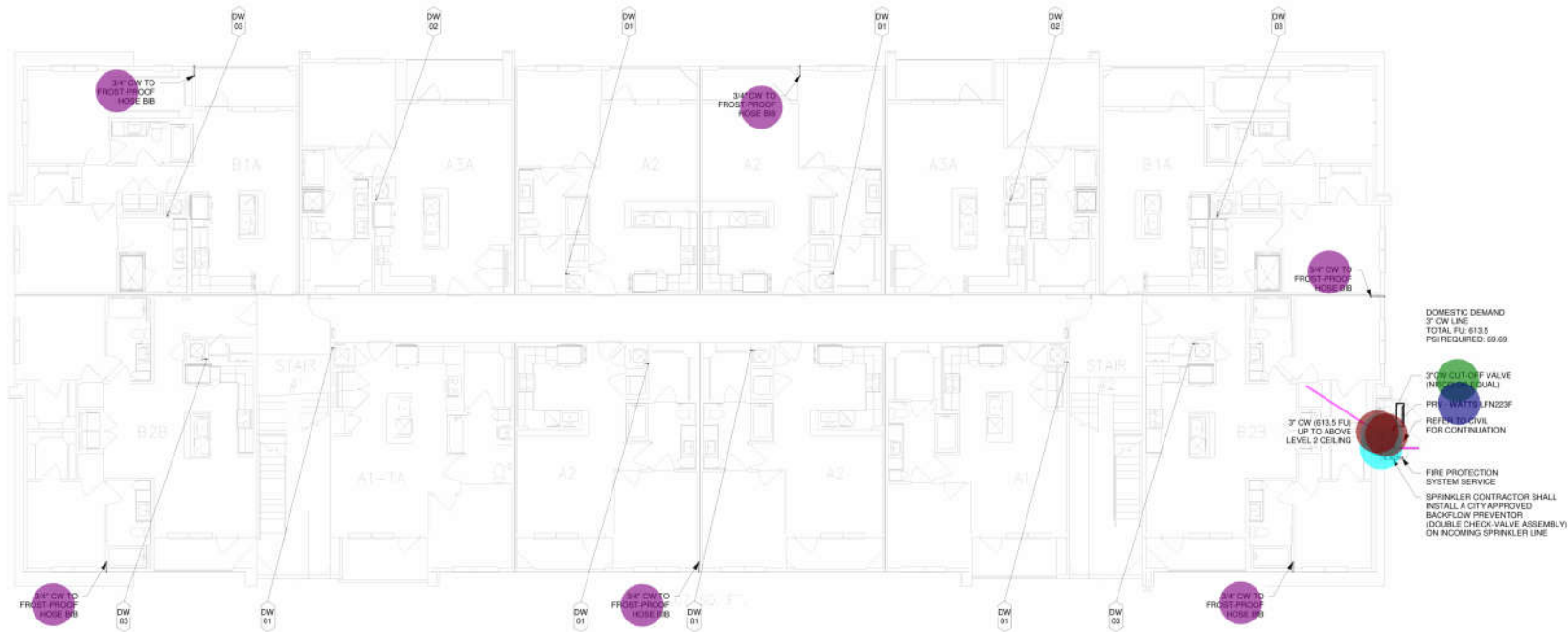
### Plumbing - Domestic Water - BLDG I - Level 1

Project number 2310  
Date 02.20.2023  
Drawn by JM  
Checked by MA

P-1-01

Scale As indicated

2/20/2024 12:11:38 PM



1 Plumbing - Domestic Water - BLDG I - Level 1  
1/8" = 1'-0"

SIMILAR: BLDG IA

3" Dia CW Pipe	78.7 FT
3" Dia CW Pipe 90 Deg Elbow	3.0 EA
3" / 3/4" Dia CW Pipe Tee	2.0 EA
3" / 2-1/2" Dia CW Pipe Reducer	1.0 EA
2" Dia CW Pipe	154.5 FT
2-1/2" Dia CW Pipe	20.5 FT
2-1/2" / 2" Dia CW Pipe Tee	1.0 EA
2-1/2" / 2" Dia CW Pipe Reducer	1.0 EA
2" / 3/4" Dia CW Pipe Reducer	1.0 EA
2" Dia CW Pipe 90 Deg Elbow	1.0 EA
2" / 1-1/2" Dia CW Pipe Tee	1.0 EA
2" / 1-1/2" Dia CW Pipe Reducer	2.0 EA
1-1/2" Dia CW Pipe	98.5 FT
1-1/2" Dia CW Pipe 90 Deg Elbow	3.0 EA
1-1/2" / 3/4" Dia CW Pipe Tee	1.0 EA
1-1/2" / 3/4" Dia CW Pipe Reducer	1.0 EA
3/4" Dia CW Pipe	522.3 FT
3/4" Dia CW Pipe 90 Deg Elbow	31.0 EA
2" Dia CW Pipe Tee	1.0 EA
3" / 1-1/4" Dia CW Pipe Tee	1.0 EA
2" / 1-1/4" Dia CW Pipe Tee	4.0 EA
1-1/2" / 1-1/4" Dia CW Pipe Reducer	0.5 EA
1-1/4" Dia CW Pipe	92.4 FT
1-1/4" Dia CW Pipe 90 Deg Elbow	0.5 EA
1-1/2" / 1-1/4" Dia CW Pipe Tee	1.0 EA
1-1/2" / 3/4" Dia CW Pipe Tee	1.0 EA
2" / 1-1/4" Dia CW Pipe Reducer	1.0 EA
3" / 1-1/2" Dia CW Pipe Tee	1.0 EA
1-1/2" Dia CW Pipe Tee	5.0 EA
1-1/4" / 3/4" Dia CW Pipe Reducer	7.0 EA
1" Dia CW Pipe	268.4 FT
1" Dia CW Pipe Tee	7.0 EA
1" / 3/4" Dia CW Pipe Reducer	7.0 EA
1-1/4" Dia CW Pipe Tee	0.5 EA
1-1/4" / 1" Dia CW Pipe Reducer	1.0 EA
1-1/4" / 1" Dia CW Pipe Tee	0.5 EA
1" Dia CW Pipe 90 Deg Elbow	12.0 EA
1-1/2" / 1" Dia CW Pipe Reducer	4.0 EA
3/4" Dia Frost Proof Hose Bibb	0.5 EA

### Keynote Legend

Key Value	Keynote Text
DW 01	1 1/4" CW TO DW RISER, 3-A1 UNITS OR 3-A2 UNITS OR 1-A1TA UNIT (L1) & 2-A1 UNITS (L2-L3), (43.5 FU), L1-L3
DW 02	1 1/4" CW TO DW RISER, 3-A3a UNITS, (52.5 FU), L1-L3
DW 03	1 1/2" CW TO DW RISER, 1-B1a UNIT (L1) & 2-B1b UNITS (L2-L3) OR 1-B1b UNIT (L1) & 2-B1a UNITS (L2-L3) OR 1-B4 UNIT (L1) & 2-B4a UNITS (L2-L3) OR 2-B2a UNITS (L1-L2) & 1-B2b UNIT (L3), (60 FU), L1-L3

### GENERAL DOMESTIC WATER NOTES

- ALL DOMESTIC WATER PIPING SHALL BE ROUTED ABOVE CONDITIONED SPACE. HORIZONTAL BUILDING DISTRIBUTION SHALL BE ROUTED ABOVE 4TH & 5TH FLOOR CEILINGS. REFER TO DETAILS FOR UNCONDITIONED CORRIDOR/BREEZEWAY CROSSINGS.
- NO JOINTS BELOW SLAB. 2" MINIMUM WASTE AND VENT BELOW SLAB.
- PLUMBING CONTRACTOR SHALL VERIFY THE LOCATION OF ALL UTILITY CONNECTIONS WITH CIVIL ENGINEERS PLANS PRIOR TO THE START OF WORK.
- PLUMBING CONTRACTOR SHALL VERIFY THE LOCATION OF ALL ACCESSIBLE AND/OR HANDICAP DWELLING UNITS WITH ARCHITECTURAL DRAWINGS AND ADJUST ACCORDINGLY.
- ALL UNIONS, VALVES, EQUIPMENT AND SERVICEABLE PLUMBING SYSTEM COMPONENTS SHALL BE READILY ACCESSIBLE.
- INSULATE ALL DOMESTIC WATER PIPING AS REQUIRED BY LOCAL CODE.
- PROVIDE WATER HAMMER ARRESTERS FOR ALL FAST-CLOSING AND ELECTRONIC VALVES PER LOCAL PLUMBING CODE.



www.MEPDeltaDesign.com

MEP CONSULTANT- MEP DELTA DESIGN  
 PO BOX 81271  
 AUSTIN TX, 78708  
 (512) 215-9792

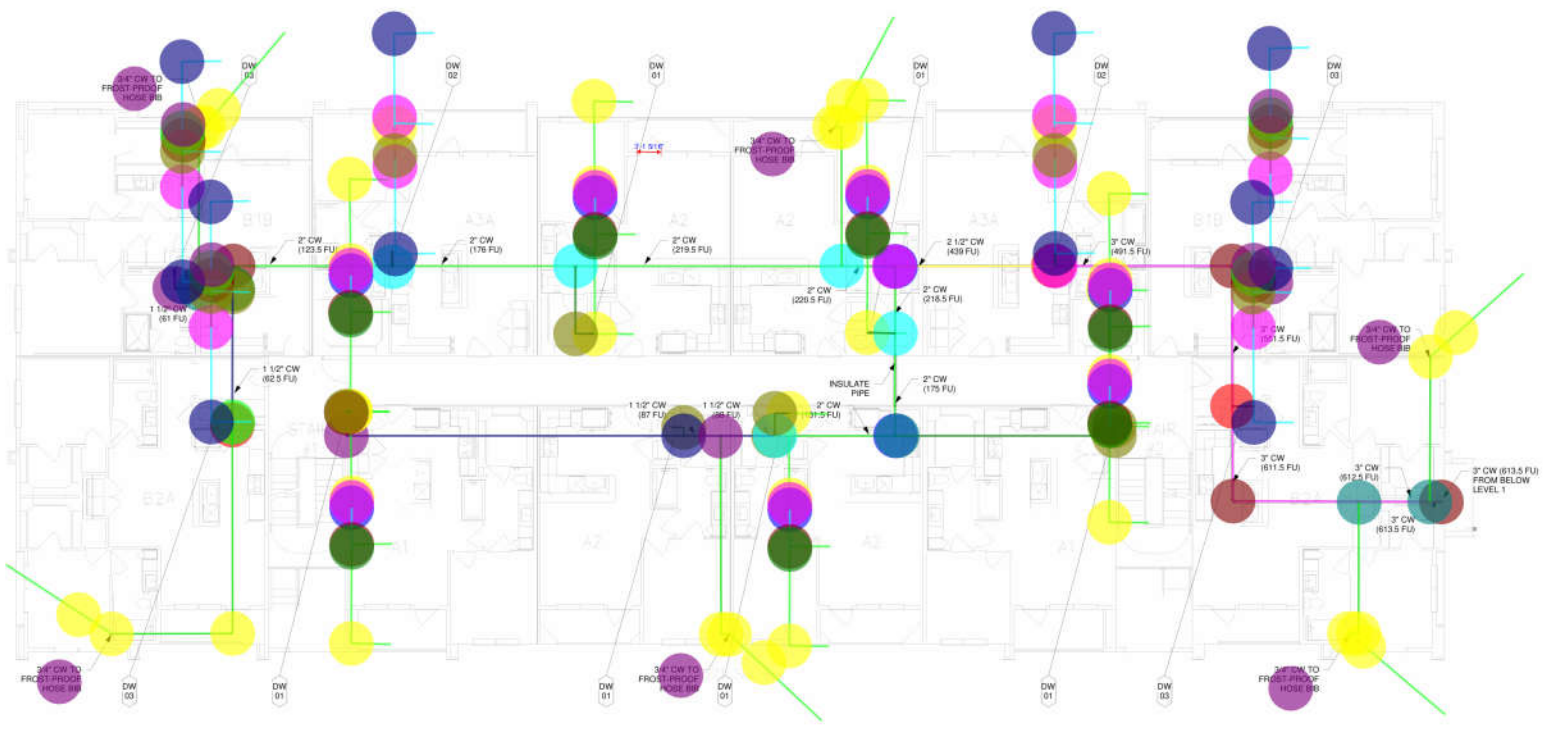
ARCHITECT - MEES & PARTNERS  
 1600 MEMORIAL DR # 100  
 HOUSTON, TX 77079  
 (281) 558-8787

STRUCTURAL - INTEGRITY STRUCTURAL  
 12777 JONES ROAD  
 HOUSTON TX, 77070  
 (281) 884-7069 - Ext. 124

CIVIL ENGINEER - KIMLEY-HORN  
 5301 SOUTHWEST PARKWAY, UPLANDS II, SUITE 100  
 AUSTIN, TX 78735  
 (512) 518-6534

ISSUANCES		
01	50% DD Set	05-19-2023
02	100% DD Set	06-26-2023
03	Permit Set	11-10-2023
04	Issue For GMP	02-20-2024

REVISIONS		
NO.	DESCRIPTION	DATE
1	GMP	02-15-2024



1 Plumbing - Domestic Water - BLDG I - Level 2  
 1/8" = 1'-0"

SIMLAR BLDG IA

### Big Valley Apartments

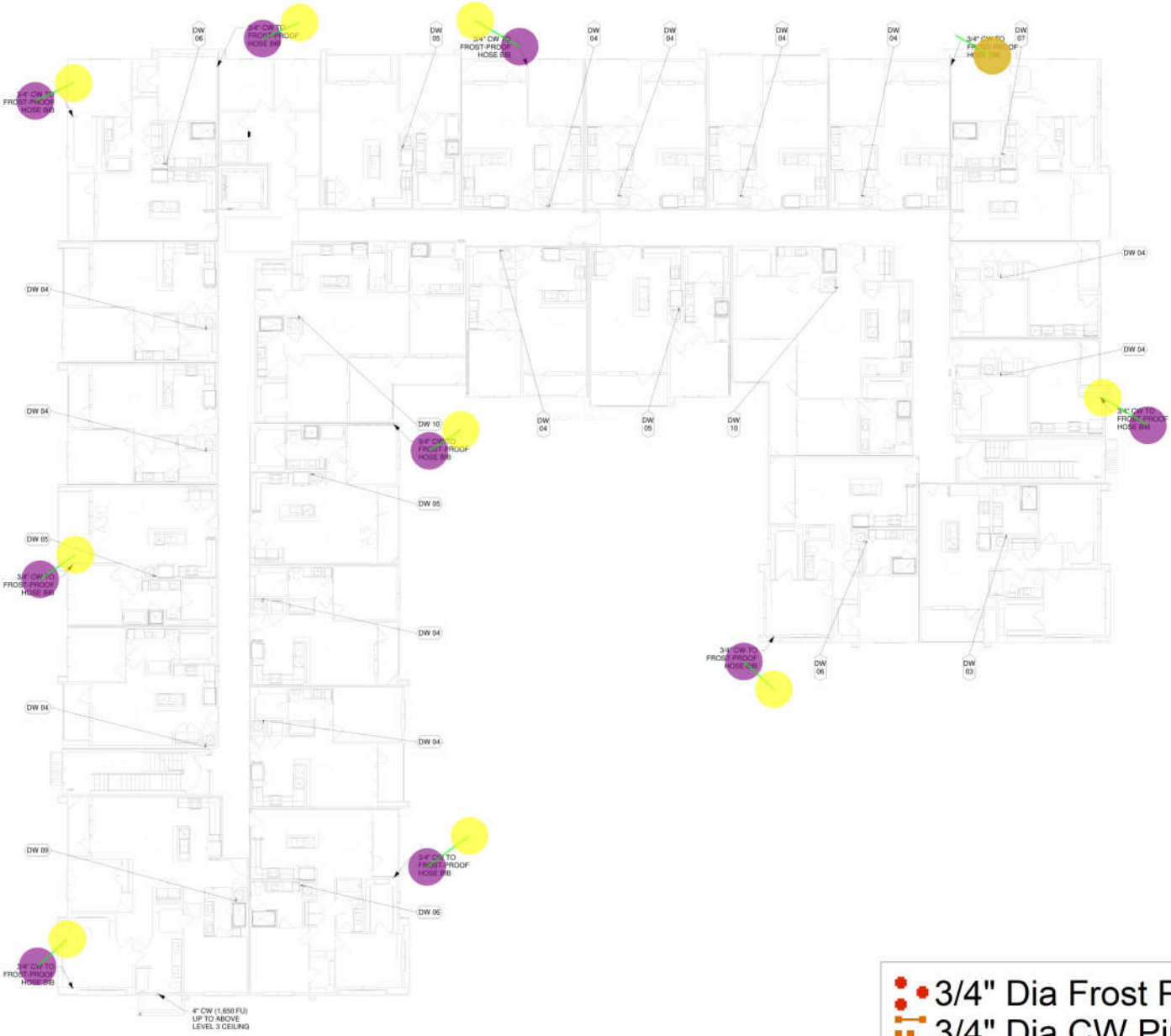
### Plumbing - Domestic Water - BLDG I - Level 2

Project number	2310
Date	02.20.2023
Drawn by	JM
Checked by	MA
<b>P-1-02</b>	
Scale	As indicated



FIRM # F-15941





1 Plumbing - Domestic Water - BLDG II - Level 2  
3/32" = 1'-0"

### GENERAL DOMESTIC WATER NOTES

1. ALL DOMESTIC WATER PIPING SHALL BE ROUTED ABOVE CONDITIONED SPACE. HORIZONTAL BUILDING DISTRIBUTION SHALL BE ROUTED ABOVE 4TH & 5TH FLOOR CEILINGS. REFER TO DETAILS FOR UNCONDITIONED CORRIDOR/BREEZEWAY CROSSINGS.
2. NO JOINTS BELOW SLAB, 2" MINIMUM WASTE AND VENT BELOW SLAB.
3. PLUMBING CONTRACTOR SHALL VERIFY THE LOCATION OF ALL UTILITY CONNECTIONS WITH CIVIL ENGINEERS PLANS PRIOR TO THE START OF WORK.
4. PLUMBING CONTRACTOR SHALL VERIFY THE LOCATION OF ALL ACCESSIBLE AND/OR HANDICAP DWELLING UNITS WITH ARCHITECTURAL DRAWINGS AND ADJUST ACCORDINGLY.
5. ALL UNIONS, VALVES, EQUIPMENT AND SERVICEABLE PLUMBING SYSTEM COMPONENTS SHALL BE READILY ACCESSIBLE.
6. INSULATE ALL DOMESTIC WATER PIPING AS REQUIRED BY LOCAL CODE.
7. PROVIDE WATER HAMMER ARRESTERS FOR ALL FAST-CLOSING AND ELECTRONIC VALVES PER LOCAL PLUMBING CODE.

Key Value	Keynote Text
DW 03	1 1/2" CW TO DW RISER, 1-B1a UNIT (L1) & 2-B1b UNITS (L2-L3) OR 1-B1b UNIT (L1) & 2-B1a UNITS (L2-L3) OR 1-B4 UNIT (L1) & 2-B4a UNITS (L2-L3) OR 2-B2a UNITS (L1-L2) & 1-B2b UNIT (L3), (60 FU), L1-L3
DW 04	4-A1 UNITS OR 4-A2 UNITS OR 4-E1 UNITS OR 1-A1TA UNIT (L1) & 3-A1 UNITS (L2-L4) OR 4-A2a UNITS OR 4-A2b UNITS OR 4-E1a UNITS OR 1-A2 UNIT (L1) & 3-A2a UNITS (L2-L4), (58 FU), L1-L4
DW 05	1 1/4" CW TO DW RISER, 4-A3 UNITS OR 4-A3a UNITS OR 1-A3 UNIT (L1), 1-A3c UNIT (L2) & 2-A3b UNITS (L3-L4), (70 FU), L1-L4
DW 06	1 1/4" CW TO DW RISER, 1-B1 UNIT (L1) & 3-B1a UNITS (L2-L4) OR 1-B1a UNIT (L1) & 3-B1b UNITS (L2-L4) OR 1-B2 UNIT (L1) & 3-B2a UNITS (L2-L4), (80 FU), L1-L4
DW 07	1 1/4" CW TO DW RISER, 1-B1TA UNIT (L1) & 3-B1c UNITS (L2-L4) OR 1-B1TA UNIT (L1), 1-B1d UNIT (L2) & 2-B1c UNITS (L3-L4), (82 FU), L1-L4
DW 09	1 1/2" CW TO DW RISER, 1-C1 UNIT (L1) & 3-C1a UNITS (L2-L4), (88 FU), L1-L4
DW 10	1 1/2" CW TO DW RISER, 4-B3 UNITS, (92 FU), L1-L4

- 3/4" Dia Frost Proof Hose Bibb
- 3/4" Dia CW Pipe
- 3/4" Dia CW Pipe 90 Deg Elbow



www.MEPDeltaDesign.com

MEP CONSULTANT- MEP DELTA DESIGN  
PO BOX 81271  
AUSTIN TX, 78718  
(512) 215-9792

ARCHITECT - MEERS & PARTNERS  
1600 MEMORIAL DR # 100  
HOUSTON, TX 77079  
(281) 558-8787

STRUCTURAL - INTEGRITY STRUCTURAL  
12777 JONES ROAD  
HOUSTON TX, 77070  
(281) 844-7069 - Ext. 124

CIVIL ENGINEER - KIMLEY-HORN  
5301 SOUTHWEST PARKWAY, UPLANDS II, SUITE 100  
AUSTIN, TX 78735  
(512) 518-6534

ISSUANCES		
01	50% DD Set	05/19/2023
02	100% DD Set	06/26/2023
03	Permit Set	11/16/2023
04	Issue For GMP	02/20/2024

REVISIONS		
NO.	DESCRIPTION	DATE

FIRM # F-15941

Big Valley Apartments

10.0 EA		Domestic
90.3 FT		Water
10.0 EA		

Checked by: JM  
Scale: As indicated

2310  
02.20.2023  
JM  
MA  
P-1-05

2/20/2024 12:11:58 PM



### GENERAL DOMESTIC WATER NOTES

1. ALL DOMESTIC WATER PIPING SHALL BE ROUTED ABOVE CONDITIONED SPACE. HORIZONTAL BUILDING DISTRIBUTION SHALL BE ROUTED ABOVE 4TH & 5TH FLOOR CEILINGS. REFER TO DETAILS FOR UNCONDITIONED CORRIDOR/BREEZEWAY CROSSINGS.
2. NO JOINTS BELOW SLAB. 2" MINIMUM WASTE AND VENT BELOW SLAB.
3. PLUMBING CONTRACTOR SHALL VERIFY THE LOCATION OF ALL UTILITY CONNECTIONS WITH CIVIL ENGINEERS PLANS PRIOR TO THE START OF WORK.
4. PLUMBING CONTRACTOR SHALL VERIFY THE LOCATION OF ALL ACCESSIBLE AND/OR HANDICAP DWELLING UNITS WITH ARCHITECTURAL DRAWINGS AND ADJUST ACCORDINGLY.
5. ALL UNIONS, VALVES, EQUIPMENT AND SERVICEABLE PLUMBING SYSTEM COMPONENTS SHALL BE READILY ACCESSIBLE.
6. INSULATE ALL DOMESTIC WATER PIPING AS REQUIRED BY LOCAL CODE.
7. PROVIDE WATER HAMMER ARRESTERS FOR ALL FAST-CLOSING AND ELECTRONIC VALVES PER LOCAL PLUMBING CODE.



www.MEPDeltaDesign.com

MEP CONSULTANT - MEP DELTA DESIGN  
PO BOX 81271  
AUSTIN TX, 78718  
(512) 215-9792

ARCHITECT - MEERS & PARTNERS  
1600 MEMORIAL DR # 100  
HOUSTON, TX 77079  
(281) 558-8787

STRUCTURAL - INTEGRITY STRUCTURAL  
12777 JONES ROAD  
HOUSTON TX, 77070  
(281) 884-7069 - Ext. 124

CIVIL ENGINEER - KIMLEY-HORN  
5303 SOUTHWEST PARKWAY, UPLANDS II, SUITE 100  
AUSTIN, TX 78735  
(512) 518-6534

#### ISSUANCES

NO.	DESCRIPTION	DATE
01	50% DD Set	05/19/2023
02	100% DD Set	06/26/2023
03	Permit Set	11/16/2023
04	Issue For GMP	02/20/2024

#### REVISIONS

NO.	DESCRIPTION	DATE

FIRM # F-15941



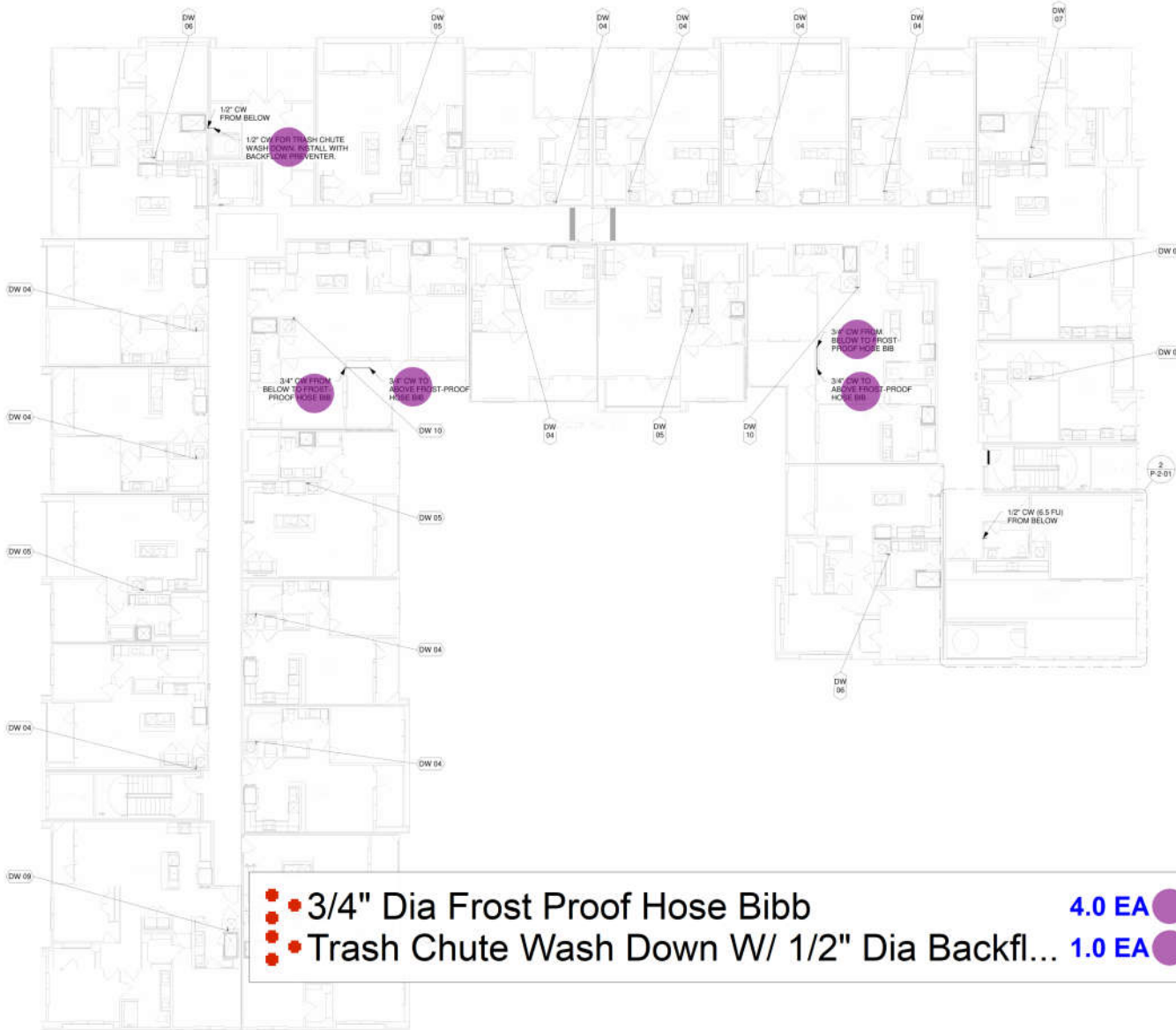
Big Valley Apartments

Plumbing - Domestic  
Water - BLDG II -  
Level 4

Project number 2310  
Date 02.20.2023  
Drawn by JM  
Checked by MA

P-1-07

Scale As indicated

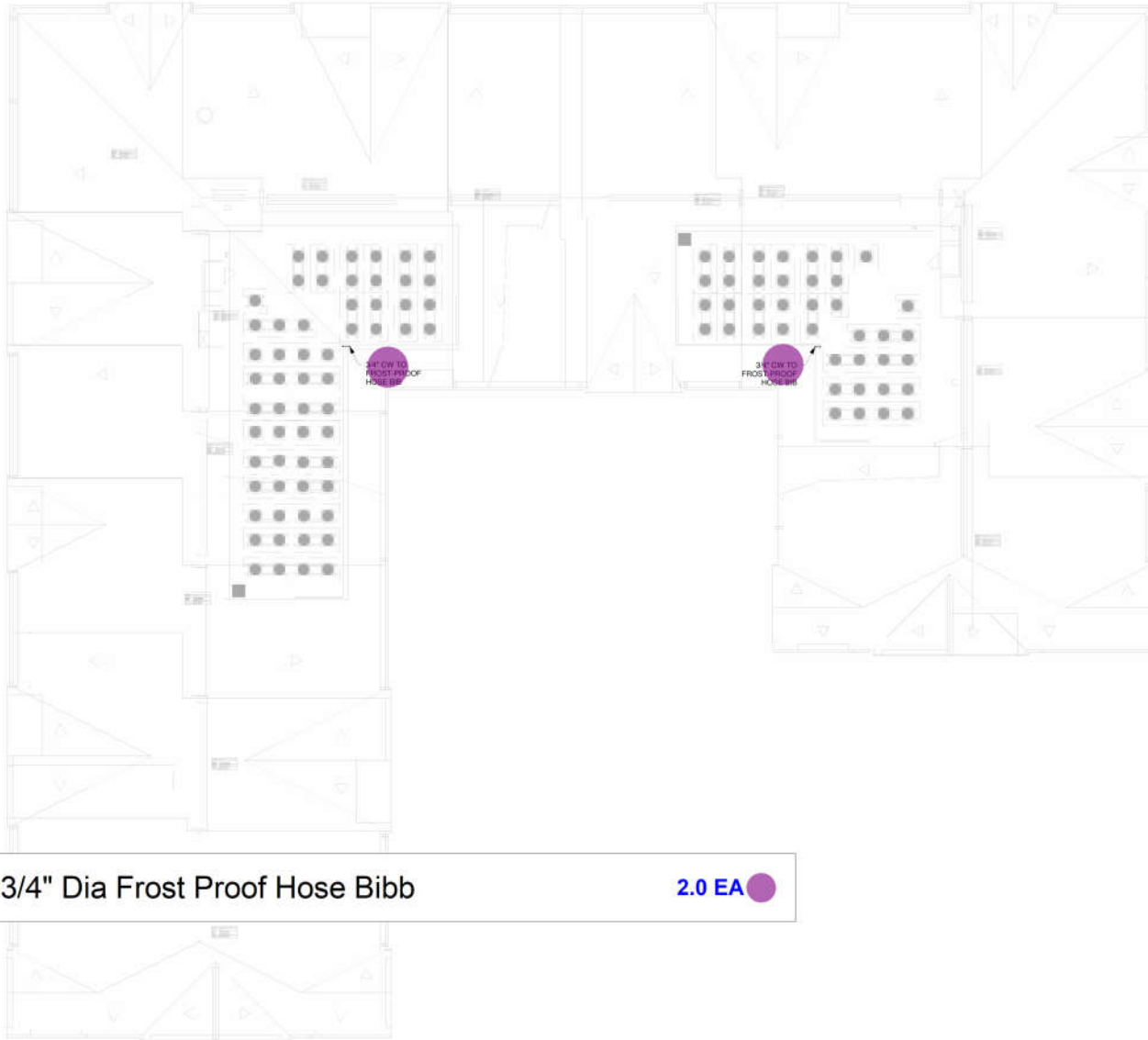


#### Keynote Legend

Key Value	Keynote Text
DW 04	4-A1 UNITS OR 4-A2 UNITS OR 4-E1 UNITS OR 1-A1TA UNIT (L1) & 3-A1 UNITS (L2-L4) OR 4-A2a UNITS OR 4-A2b UNITS OR 4-E1a UNITS OR 1-A2 UNIT (L1) & 3-A2a UNITS (L2-L4), (58 FU), L1-L4
DW 05	1 1/4" CW TO DW RISER, 4-A3 UNITS OR 4-A3a UNITS OR 1-A3 UNIT (L1), 1-A3C UNIT (L2) & 2-A3B UNITS (L3-L4) OR 1-A3a UNIT (L1), 1-A3C UNIT (L2) & 2-A3B UNITS (L3-L4), (70 FU), L1-L4
DW 06	1 1/4" CW TO DW RISER, 1-B1 UNIT (L1) & 3-B1a UNITS (L2-L4) OR 1-B1a UNIT (L1) & 3-B1b UNITS (L2-L4) OR 1-B2 UNIT (L1) & 3-B2a UNITS (L2-L4), (80 FU), L1-L4
DW 07	1 1/4" CW TO DW RISER, 1-B1TA UNIT (L1) & 3-B1c UNITS (L2-L4) OR 1-B1TA UNIT (L1), 1-B1b UNIT (L2) & 2-B1c UNITS (L3-L4), (82 FU), L1-L4
DW 09	1 1/2" CW TO DW RISER, 1-C1 UNIT (L1) & 3-C1a UNITS (L2-L4), (88 FU), L1-L4
DW 10	1 1/2" CW TO DW RISER, 4-B3 UNITS, (92 FU), L1-L4

●●● 3/4" Dia Frost Proof Hose Bibb 4.0 EA ●●  
●●● Trash Chute Wash Down W/ 1/2" Dia Backfl... 1.0 EA ●●

1 Plumbing - Domestic Water - BLDG II - Level 4  
3/32" = 1'-0"



**GENERAL DOMESTIC WATER NOTES**

1. ALL DOMESTIC WATER PIPING SHALL BE ROUTED ABOVE CONDITIONED SPACE. HORIZONTAL BUILDING DISTRIBUTION SHALL BE ROUTED ABOVE 4TH & 5TH FLOOR CEILINGS. REFER TO DETAILS FOR UNCONDITIONED CORRIDOR/BREEZEWAY CROSSINGS.
2. NO JOINTS BELOW SLAB. 2" MINIMUM WASTE AND VENT BELOW SLAB.
3. PLUMBING CONTRACTOR SHALL VERIFY THE LOCATION OF ALL UTILITY CONNECTIONS WITH CIVIL ENGINEERS PLANS PRIOR TO THE START OF WORK.
4. PLUMBING CONTRACTOR SHALL VERIFY THE LOCATION OF ALL ACCESSIBLE AND/OR HANDICAP DWELLING UNITS WITH ARCHITECTURAL DRAWINGS AND ADJUST ACCORDINGLY.
5. ALL UNIONS, VALVES, EQUIPMENT AND SERVICEABLE PLUMBING SYSTEM COMPONENTS SHALL BE READILY ACCESSIBLE.
6. INSULATE ALL DOMESTIC WATER PIPING AS REQUIRED BY LOCAL CODE.
7. PROVIDE WATER HAMMER ARRESTERS FOR ALL FAST-CLOSING AND ELECTRONIC VALVES PER LOCAL PLUMBING CODE.



www.MEPDeltaDesign.com

MEP CONSULTANT- MEP DELTA DESIGN  
PO BOX 81271  
AUSTIN TX, 78718  
(512) 215-9792

ARCHITECT - MEERS & PARTNERS  
1600 MEMORIAL DR # 100  
HOUSTON, TX 77079  
(281) 558-8787

STRUCTURAL - INTEGRITY STRUCTURAL  
12777 JONES ROAD  
HOUSTON TX, 77070  
(281) 894-7069 - Ext. 124

CIVIL ENGINEER - KIMLEY-HORN  
5301 SOUTHWEST PARKWAY, UPLANDS II, SUITE 100  
AUSTIN, TX 78735  
(512) 518-6534

ISSUANCES		
01	50% DD Set	05-19-2023
02	100% DD Set	06-26-2023
03	Permit Set	11-10-2023
04	Issue For GMP	02-20-2024

REVISIONS		
NO.	DESCRIPTION	DATE



FIRM # F-15941

**Big Valley Apartments**

**Plumbing - Domestic Water - BLDG II - Roof**

Project number 2310  
Date 02.20.2023  
Drawn by JM  
Checked by MA

**P-1-08**

Scale As indicated

3/4" Dia Frost Proof Hose Bibb

2.0 EA













### Keynote Legend

Key Value	Keynote Text
SS 01	FLOOR SINK (6 FU) L1
SS 09	HUB DRAIN (1 FU) L1
SS 11	LAV (1 FU) L1
SS 12	WC (3 FU) L1
SS 18	WC/LAV (6 FU) L2-L3
SS 19	HUB DRAIN (3 FU) L1-L3
SS 20	ISLAND KITCHEN SINK (6 FU) L1-L3
SS 21	KITCHEN SINK (6 FU) L1-L3
SS 22	WASHER (9 FU) L1-L3
SS 23	SHOWER (6 FU) L1-L3
SS 24	TUB (6 FU) L1-L3
SS 25	DBL. LAV (6 FU) L1-L3
SS 26	WC (9 FU) L1-L3
SS 27	WC/LAV (12 FU) L1-L3
SS 28	WC/LAV/TUB (18 FU) L1-L3

### GENERAL SANITARY SEWER NOTES

- ALL SANITARY PIPING SHALL BE SLOPED AT A MINIMUM OF 1/8" PER FOOT UNLESS OTHERWISE NOTED.
- PLUMBING CONTRACTOR SHALL VERIFY THE LOCATION OF ALL UTILITY CONNECTIONS, FLOW LINES AND INVERT ELEVATIONS WITH CIVIL PLANS PRIOR TO THE START OF WORK.
- PROVIDE CLEANOUTS AT THE BOTTOM OF ALL SANITARY SOIL STACKS AND AT EACH CHANGE IN SANITARY SEWER DIRECTION GREATER THAN 45° PER LOCAL PLUMBING CODE.
- PLUMBING CONTRACTOR TO MAINTAIN A MINIMUM OF 12" BELOW SLAB WITH ALL SANITARY PIPING.
- PLUMBING SYSTEM VENTS SHALL MAINTAIN 10'-0" CLEAR FROM ANY BUILDING SYSTEM INTAKE.



www.MEPDeltaDesign.com

MEP CONSULTANT - MEP DELTA DESIGN  
PO BOX 81271  
AUSTIN TX, 78708  
(512) 215-9792

ARCHITECT - MEERKS & PARTNERS  
1600 MEMORIAL DR # 100  
HOUSTON, TX 77079  
(281) 558-8787

STRUCTURAL - INTEGRITY STRUCTURAL  
12777 JONES ROAD  
HOUSTON TX, 77070  
(281) 894-7069 - Ext. 124

CIVIL ENGINEER - KIMLEY-HORN  
5301 SOUTHWEST PARKWAY, UPLANDS II, SUITE 100  
AUSTIN, TX 78735  
(512) 518-6534

ISSUANCES	NO.	DATE	DESCRIPTION
01	50% DD Set	05-19-2023	
02	100% DD Set	06-26-2023	
03	Permit Set	11-16-2023	
04	Issue For GMP	02-20-2024	

REVISIONS	NO.	DESCRIPTION	DATE

FIRM # F-15941



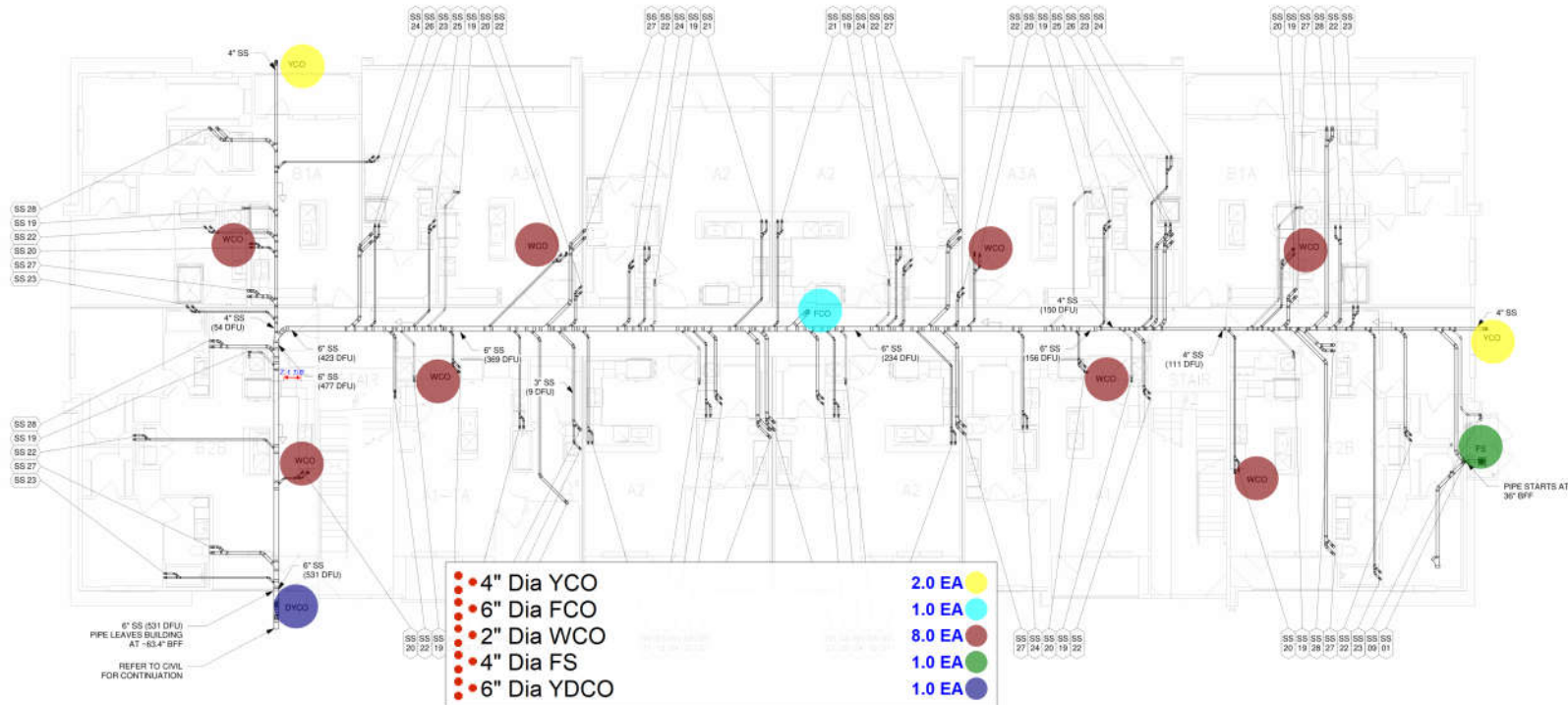
## Big Valley Apartments

### Plumbing - Sanitary Sewer - BLDG I - #2 - Level 1

Project number	2310
Date	02.20.2023
Drawn by	JM
Checked by	MA

P-1-14

Scale As indicated



1 Plumbing - Sanitary Sewer - BLDG I - #2 - Level 1  
1/8" = 1'-0"

Key Value	Keynote Text
SS 01	FLOOR SINK (8 FU) L1
SS 09	HUB DRAIN (1 FU) L1
SS 11	LAV (1 FU) L1
SS 12	WC (3 FU) L1
SS 18	WC/LAV (6 FU) L2-L3
SS 19	HUB DRAIN (3 FU) L1-L3
SS 20	ISLAND KITCHEN SINK (6 FU) L1-L3
SS 21	KITCHEN SINK (6 FU) L1-L3
SS 22	WASHER (9 FU) L1-L3
SS 23	SHOWER (6 FU) L1-L3
SS 24	TUB (6 FU) L1-L3
SS 25	DBL. LAV (6 FU) L1-L3
SS 26	WC (9 FU) L1-L3
SS 27	WC/LAV (12 FU) L1-L3
SS 28	WC/LAV/TUB (18 FU) L1-L3

### GENERAL SANITARY SEWER NOTES

- ALL SANITARY PIPING SHALL BE SLOPED AT A MINIMUM OF 1/8" PER FOOT UNLESS OTHERWISE NOTED.
- PLUMBING CONTRACTOR SHALL VERIFY THE LOCATION OF ALL UTILITY CONNECTIONS, FLOW LINES AND INVERT ELEVATIONS WITH CIVIL PLANS PRIOR TO THE START OF WORK.
- PROVIDE CLEANOUTS AT THE BOTTOM OF ALL SANITARY SOIL STACKS AND AT EACH CHANGE IN SANITARY SEWER DIRECTION GREATER THAN 45° PER LOCAL PLUMBING CODE.
- PLUMBING CONTRACTOR TO MAINTAIN A MINIMUM OF 12" BELOW SLAB WITH ALL SANITARY PIPING.
- PLUMBING SYSTEM VENTS SHALL MAINTAIN 10'-0" CLEAR FROM ANY BUILDING SYSTEM INTAKE.



www.MEPDeltaDesign.com

MEP CONSULTANT - MEP DELTA DESIGN  
PO BOX 81271  
AUSTIN TX, 78708  
(512) 215-9792

ARCHITECT - MEERS & PARTNERS  
1600 MEMORIAL DR # 100  
HOUSTON, TX 77079  
(281) 558-8787

STRUCTURAL - INTEGRITY STRUCTURAL  
12777 JONES ROAD  
HOUSTON TX, 77070  
(281) 884-7069 - Ext. 124

CIVIL ENGINEER - KIMLEY-HORN  
5301 SOUTHWEST PARKWAY, UPLANDS II, SUITE 100  
AUSTIN, TX 78735  
(512) 518-6534

NO.	DESCRIPTION	DATE
1	GMP	02.15.2024



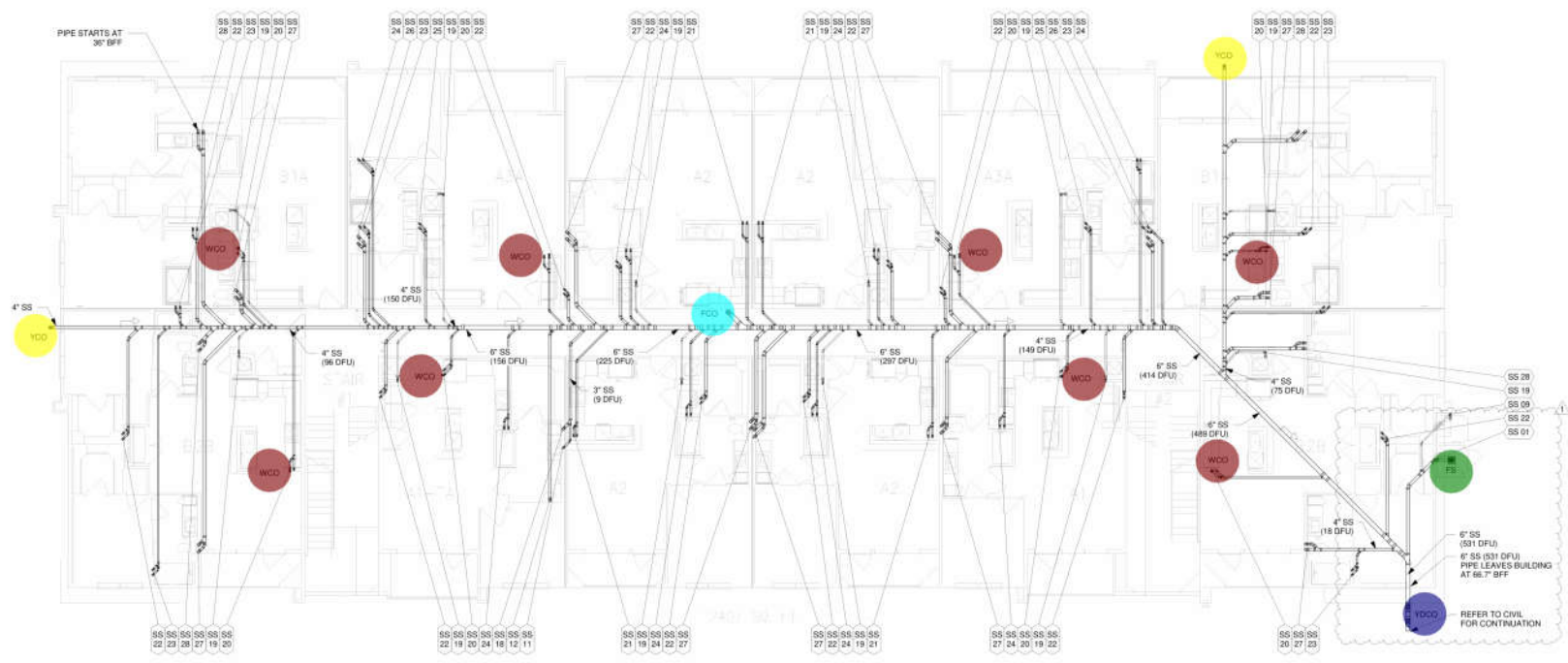
### Big Valley Apartments

### Plumbing - Sanitary Sewer - BLDG I - #3 - Level 1

Project number 2310  
Date 02.20.2023  
Drawn by JM  
Checked by MA

### P-1-15

Scale As indicated



• 4" Dia YCO	2.0 EA
• 6" Dia FCO	1.0 EA
• 2" Dia WCO	8.0 EA
• 4" Dia FS	1.0 EA
• 6" Dia YDCO	1.0 EA

2/20/2024 12:13:25 PM



### Keynote Legend

Key Value	Keynote Text
SS 18	WC/LAV (8 FU) L2-L3
SS 19	HUB DRAIN (3 FU) L1-L3
SS 20	ISLAND KITCHEN SINK (6 FU) L1-L3
SS 21	KITCHEN SINK (6 FU) L1-L3
SS 22	WASHER (8 FU) L1-L3
SS 23	SHOWER (6 FU) L1-L3
SS 24	TUB (6 FU) L1-L3
SS 25	DBL LAV (6 FU) L1-L3
SS 26	WC (9 FU) L1-L3
SS 27	WC/LAV (12 FU) L1-L3
SS 28	WC/LAV/TUB (18 FU) L1-L3

3" Dia SS Pipe	787.2 FT
3" Dia SS Pipe 45 Deg Elbow	152.0 EA
3" Dia SS Pipe Wye	48.0 EA
3" / 2" Dia SS Pipe Reducer	52.0 EA
2" Dia SS Pipe	296.1 FT
2" Dia SS Pipe Wye	80.0 EA
2" Dia Vent Pipe	672.2 FT
2" Dia Vent Pipe Tee	16.0 EA
2" Dia Vent Pipe 90 Deg Elbow	80.0 EA
3" Dia CO	24.0 EA
2" Dia SS Pipe	1048.2 FT
2" Dia SS Pipe 45 Deg Elbow	168.0 EA
2" / 1-1/2" Dia SS Pipe Reducer	64.0 EA
2" / 1-1/2" Dia SS Pipe Wye	24.0 EA
2" Dia CO	24.0 EA
1-1/2" Dia Vent Pipe	1011.1 FT
1-1/2" Dia Vent Pipe Tee	24.0 EA
1-1/2" Dia Vent Pipe 90 Deg Elbow	120.0 EA
3" / 2" Dia SS Pipe Wye	8.0 EA
2" / 1-1/2" Dia SS Pipe Reducer	8.0 EA
2" Dia WCO	8.0 EA

### GENERAL SANITARY SEWER NOTES

- ALL SANITARY PIPING SHALL BE SLOPED AT A MINIMUM OF 1/8" PER FOOT UNLESS OTHERWISE NOTED.
- PLUMBING CONTRACTOR SHALL VERIFY THE LOCATION OF ALL UTILITY CONNECTIONS, FLOW LINES AND INVERT ELEVATIONS WITH CIVIL PLANS PRIOR TO THE START OF WORK.
- PROVIDE CLEANOUTS AT THE BOTTOM OF ALL SANITARY SOIL STACKS AND AT EACH CHANGE IN SANITARY SEWER DIRECTION GREATER THAN 45° PER LOCAL PLUMBING CODE.
- PLUMBING CONTRACTOR TO MAINTAIN A MINIMUM OF 12" BELOW SLAB WITH ALL SANITARY PIPING.
- PLUMBING SYSTEM VENT PIPING SHALL MAINTAIN 10'-0" CLEAR FROM ANY BUILDING SYSTEM INTAKE.



www.MEPDeltaDesign.com

MEP CONSULTANT- MEP DELTA DESIGN  
PO BOX 81271  
AUSTIN TX, 78718  
(512) 215-9792

ARCHITECT - MEERS & PARTNERS  
1600 MEMORIAL DR # 100  
HOUSTON, TX 77079  
(281) 558-8787

STRUCTURAL - INTEGRITY STRUCTURAL  
12777 JONES ROAD  
HOUSTON TX, 77070  
(281) 894-7069 - Ext. 124

CIVIL ENGINEER - KIMLEY-HORN  
300 SOUTHWEST PARKWAY, UPLANDS II, SUITE 100  
AUSTIN, TX 78735  
(512) 518-6534

#### ISSUANCES

NO.	DESCRIPTION	DATE
01	50% DD Set	05/19/2023
02	100% DD Set	06/26/2023
03	Permit Set	11/10/2023
04	Issue For GMP	02/20/2024

#### REVISIONS

NO.	DESCRIPTION	DATE

FIRM # F-15941



Big Valley Apartments

Plumbing - Sanitary  
Sewer - BLDG I - Level  
2

Project number 2310  
Date 02.20.2023  
Drawn by JM  
Checked by MA

P-1-17

Scale As indicated

1 Plumbing - Sanitary Sewer - BLDG I - Level 2  
1/8" = 1'-0"

2/20/2024 12:13:46 PM







### GENERAL SANITARY SEWER NOTES

ALL SANITARY PIPING SHALL BE SLOPED AT A MINIMUM OF 1/8" PER FOOT UNLESS OTHERWISE NOTED.

PLUMBING CONTRACTOR SHALL VERIFY THE LOCATION OF ALL UTILITY CONNECTIONS, FLOW LINES AND INVERT ELEVATIONS WITH CIVIL PLANS PRIOR TO THE START OF WORK.

PROVIDE CLEANDOUTS AT THE BOTTOM OF ALL SANITARY SOIL STACKS AT EACH CHANGE IN SANITARY SEWER DIRECTION GREATER THAN 90 DEGREES PER LOCAL PLUMBING CODE.

PLUMBING CONTRACTOR TO MAINTAIN A MINIMUM OF 12" BELOW SLAB WITH ALL SANITARY PIPING.

PLUMBING SYSTEM VENTS SHALL MAINTAIN 10'-0" CLEAR FROM ANY BUILDING SYSTEM INTAKE.



www.MepDeltaDesign.com

MEP CONSULTANT: MEP DELTA DESIGN  
PROJECT NO: 2310  
DATE: 02/20/23

DESIGN PARTNERS

PROPERTY STRUCTURE

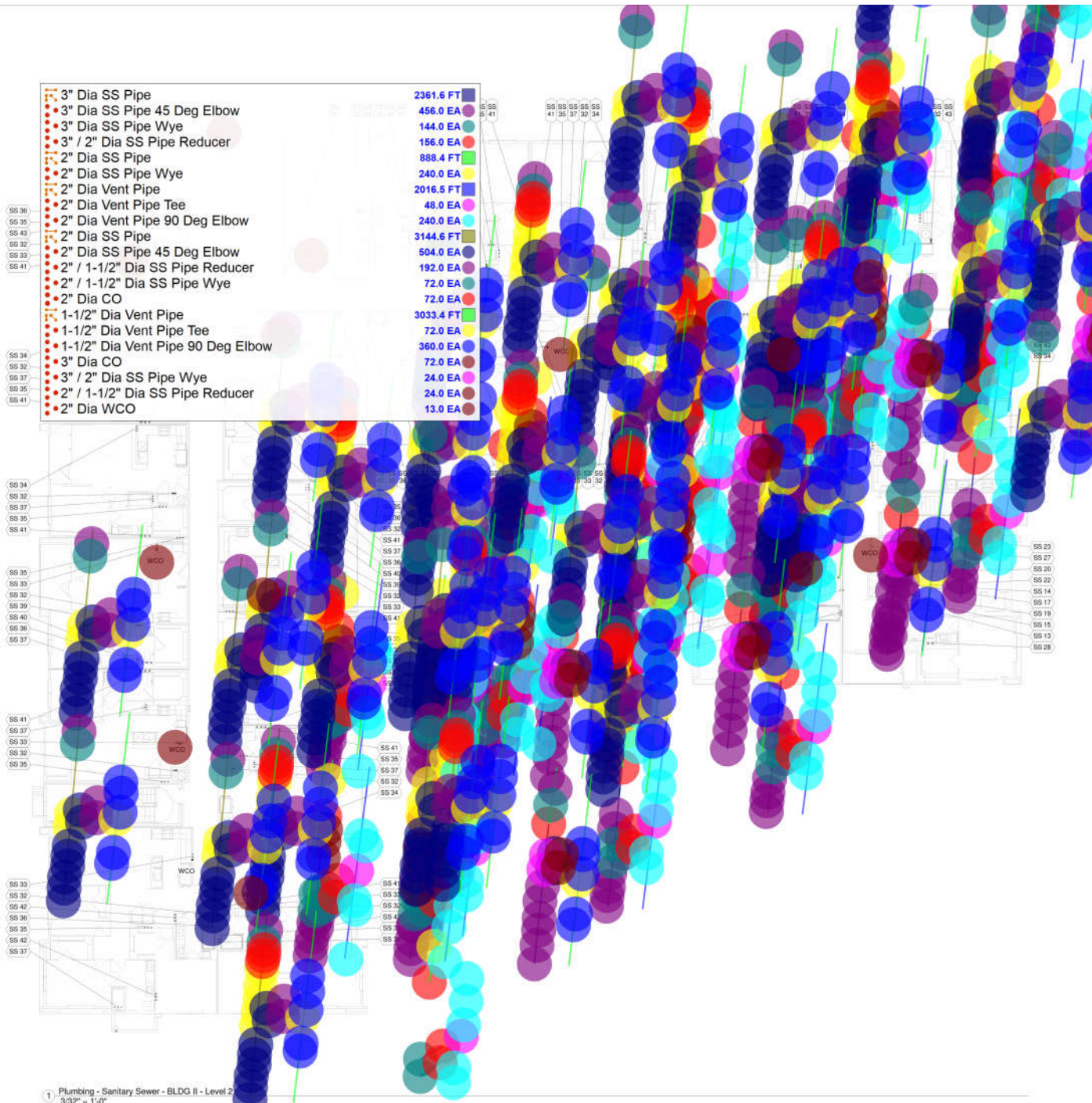
WOMLEY-HORN

PROJECT: PARKWAY, LI

#### Key Value

SS 13	FLOOR DRAIN
SS 14	HUB DRAIN
SS 15	KITCHEN
SS 16	PUBLIC LAV
SS 17	PUBLIC WASH
SS 19	HUB DRAIN
SS 20	ISLAND KITCHEN SINK (8 FU)
SS 22	WASHER (18 FU) L1-L2
SS 23	SHOWER (18 FU) L1-L2
SS 27	WC LAV (18 FU) L1-L2
SS 28	WC LAV (18 FU) L2
SS 29	SHOWER (18 FU) L2
SS 30	WC LAV (18 FU) L2-L4
SS 32	HUB DRAIN (4 FU) L1
SS 33	ISLAND KITCHEN SINK (8 FU)
SS 34	KITCHEN SINK (8 FU)
SS 35	WASHER (18 FU) L1
SS 36	SHOWER (18 FU) L1
SS 37	TUB (18 FU) L1
SS 38	LAV (18 FU) L1
SS 39	DBL LAV (18 FU) L1
SS 40	WC (18 FU) L1
SS 41	WC (18 FU) L2
SS 42	WC (18 FU) L2-L4
SS 43	WC (18 FU) L2-L4

3" Dia SS Pipe	2361.6 FT
3" Dia SS Pipe 45 Deg Elbow	456.0 EA
3" Dia SS Pipe Wye	144.0 EA
3" / 2" Dia SS Pipe Reducer	156.0 EA
2" Dia SS Pipe	888.4 FT
2" Dia SS Pipe Wye	240.0 EA
2" Dia Vent Pipe	2016.5 FT
2" Dia Vent Pipe Tee	48.0 EA
2" Dia Vent Pipe 90 Deg Elbow	240.0 EA
2" Dia SS Pipe	3144.6 FT
2" Dia SS Pipe 45 Deg Elbow	504.0 EA
2" / 1-1/2" Dia SS Pipe Reducer	192.0 EA
2" / 1-1/2" Dia SS Pipe Wye	72.0 EA
2" Dia CO	72.0 EA
1-1/2" Dia Vent Pipe	3033.4 FT
1-1/2" Dia Vent Pipe Tee	72.0 EA
1-1/2" Dia Vent Pipe 90 Deg Elbow	360.0 EA
3" Dia CO	72.0 EA
3" / 2" Dia SS Pipe Wye	24.0 EA
2" / 1-1/2" Dia SS Pipe Reducer	24.0 EA
2" Dia WCO	13.0 EA



1 Plumbing - Sanitary Sewer - BLDG II - Level 2  
3/32" = 1'-0"

Big Valley Apartments

Plumbing - Sanitary  
Sewer - BLDG II -  
Level 2

Project number 2310  
Date 02.20.2023  
Drawn by JM  
Checked by MA

P-1-20

Scale As indicated













Keynote Legend	
Key Value	Keynote Text
SS 29	SHOWER (4 FU) L2-L4
SS 30	WCLAV (8 FU) L2-L4
SS 32	HUB DRAIN (4 FU) L1-L4
SS 33	ISLAND KITCHEN SINK (8 FU) L1-L4
SS 34	KITCHEN SINK (8 FU) L1-L4
SS 35	WASHER (12 FU) L1-L4
SS 36	SHOWER (8 FU) L1-L4
SS 37	TUB (8 FU) L1-L4
SS 38	LAV (4 FU) L1-L4
SS 39	DBL. LAV (8 FU) L1-L4
SS 40	WC (12 FU) L1-L4
SS 41	WCLAV (16 FU) L1-L4
SS 42	WCDBL LAV (20 FU) L1-L4
SS 43	WCLAV/TUB (24 FU) L1-L4

### GENERAL SANITARY SEWER NOTES

1. ALL SANITARY PIPING SHALL BE SLOPED AT A MINIMUM OF 1/8" PER FOOT UNLESS OTHERWISE NOTED.
2. PLUMBING CONTRACTOR SHALL VERIFY THE LOCATION OF ALL UTILITY CONNECTIONS, FLOW LINES AND INVERT ELEVATIONS WITH CIVIL PLANS PRIOR TO THE START OF WORK.
3. PROVIDE CLEANOUTS AT THE BOTTOM OF ALL SANITARY SOIL STACKS AND AT EACH CHANGE IN SANITARY SEWER DIRECTION GREATER THAN 45° PER LOCAL PLUMBING CODE.
4. PLUMBING CONTRACTOR TO MAINTAIN A MINIMUM OF 12" BELOW SLAB WITH ALL SANITARY PIPING.
5. PLUMBING SYSTEM VENTS SHALL MAINTAIN 10'-0" CLEAR FROM ANY BUILDING SYSTEM INTAKE.



www.MEPDeltaDesign.com

MEP CONSULTANT- MEP DELTA DESIGN  
PO BOX 81271  
AUSTIN TX, 78718  
(512) 215-9792

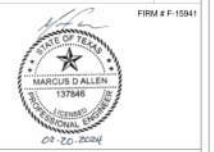
ARCHITECT - MEERS & PARTNERS  
1600 MEMORIAL DR # 100  
HOUSTON, TX 77079  
(281) 558-8787

STRUCTURAL - INTEGRITY STRUCTURAL  
12777 JONES ROAD  
HOUSTON TX, 77070  
(281) 884-7069 - Ext. 124

CIVIL ENGINEER - KIMLEY-HORN  
5301 SOUTHWEST PARKWAY, UPLANDS II, SUITE 100  
AUSTIN, TX 78735  
(512) 518-6534

ISSUANCES		
01	50% DD Set	05/19/2023
02	100% DD Set	06/26/2023
03	Permit Set	11/16/2023
04	Issue For GMP	02/20/2024

REVISIONS		
NO.	DESCRIPTION	DATE



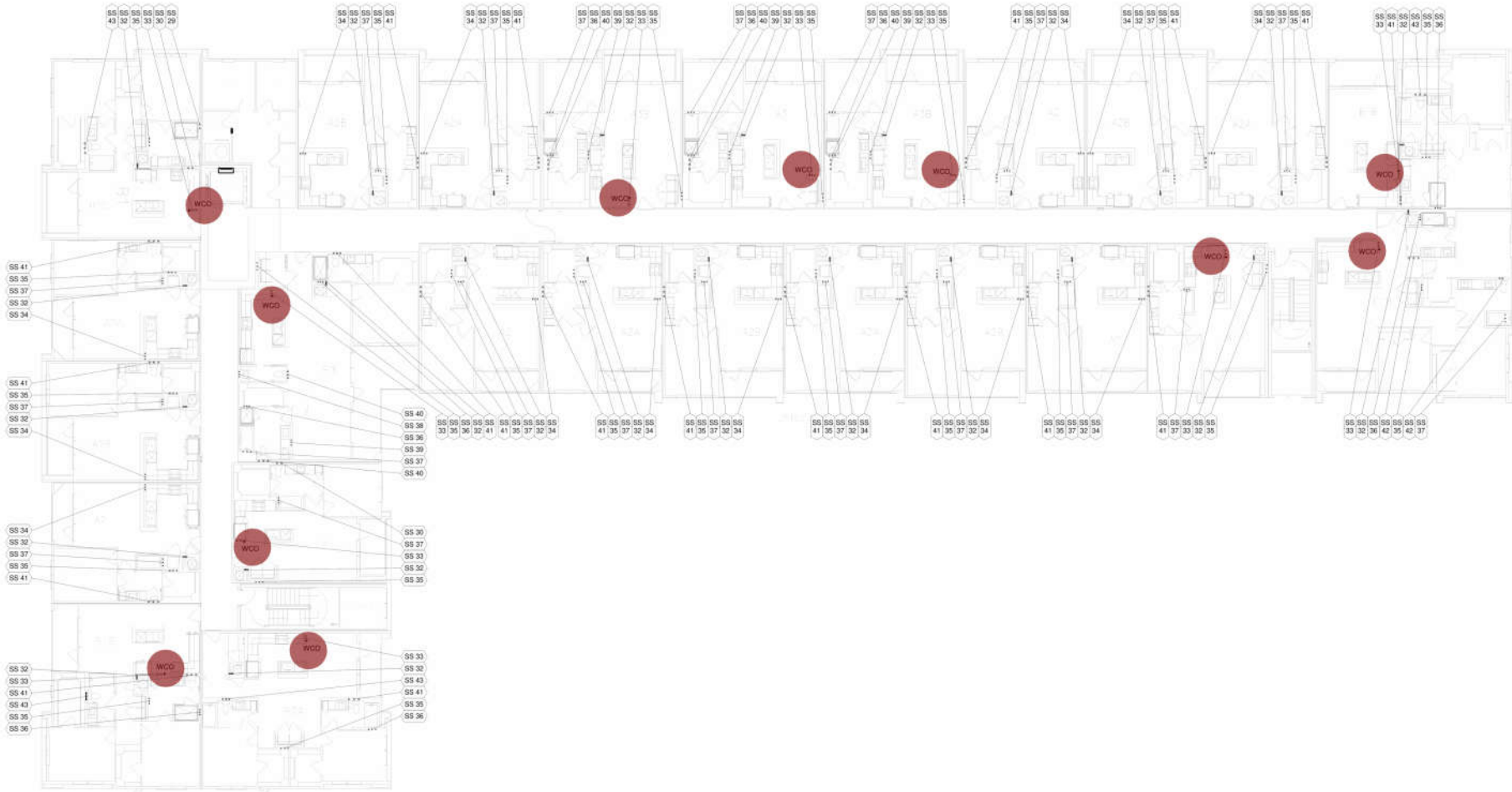
## Big Valley Apartments

### Plumbing - Sanitary Sewer - BLDG III - Level 4

Project number 2310  
Date 02.20.2023  
Drawn by JM  
Checked by MA

**P-1-26**

Scale As indicated



1 Plumbing - Sanitary Sewer - BLDG III - Level 4  
3/32" = 1'-0"

**2" Dia WCO**

**11.0 EA**

2/20/2024 12:15:51 PM

## GENERAL STORM WATER NOTES

1. ALL STORM WATER PIPING SHALL BE SLOPED AT A MINIMUM OF 1/8" PER FOOT UNLESS OTHERWISE NOTED.
2. PLUMBING CONTRACTOR SHALL VERIFY THE LOCATION OF ALL UTILITY CONNECTIONS, FLOW LINES AND INVERT ELEVATIONS WITH CIVIL PLANS PRIOR TO THE START OF WORK.
3. PROVIDE CLEANOUTS AT THE BOTTOM OF ALL STORM WATER STACKS AND AT EACH CHANGE IN STORM WATER DIRECTION GREATER THAN 45° PER LOCAL PLUMBING CODE.
4. PLUMBING CONTRACTOR TO MAINTAIN A MINIMUM OF 12" BELOW SLAB WITH ALL SANITARY PIPING.



www.MEPDeltaDesign.com

MEP CONSULTANT- MEP DELTA DESIGN  
PO BOX 81271  
AUSTIN TX, 78718  
(512) 215-9792

ARCHITECT - MEERS & PARTNERS  
1600 MEMORIAL DR # 100  
HOUSTON, TX 77079  
(281) 558-8787

STRUCTURAL - INTEGRITY STRUCTURAL  
12777 JONES ROAD  
HOUSTON TX, 77070  
(281) 894-7069 - Ext. 124

CIVIL ENGINEER - KIMLEY-HORN  
5301 SOUTHWEST PARKWAY, UPLANDS II, SUITE 100  
AUSTIN, TX 78735  
(512) 518-6534

### ISSUANCES

NO.	DESCRIPTION	DATE
01	50% DD Set	05/19/2023
02	100% DD Set	06/26/2023
03	Permit Set	11/16/2023
04	Issue For GMP	02/20/2024

### REVISIONS

NO.	DESCRIPTION	DATE
1	GMP	02/15/2024

FIRM # F-15941



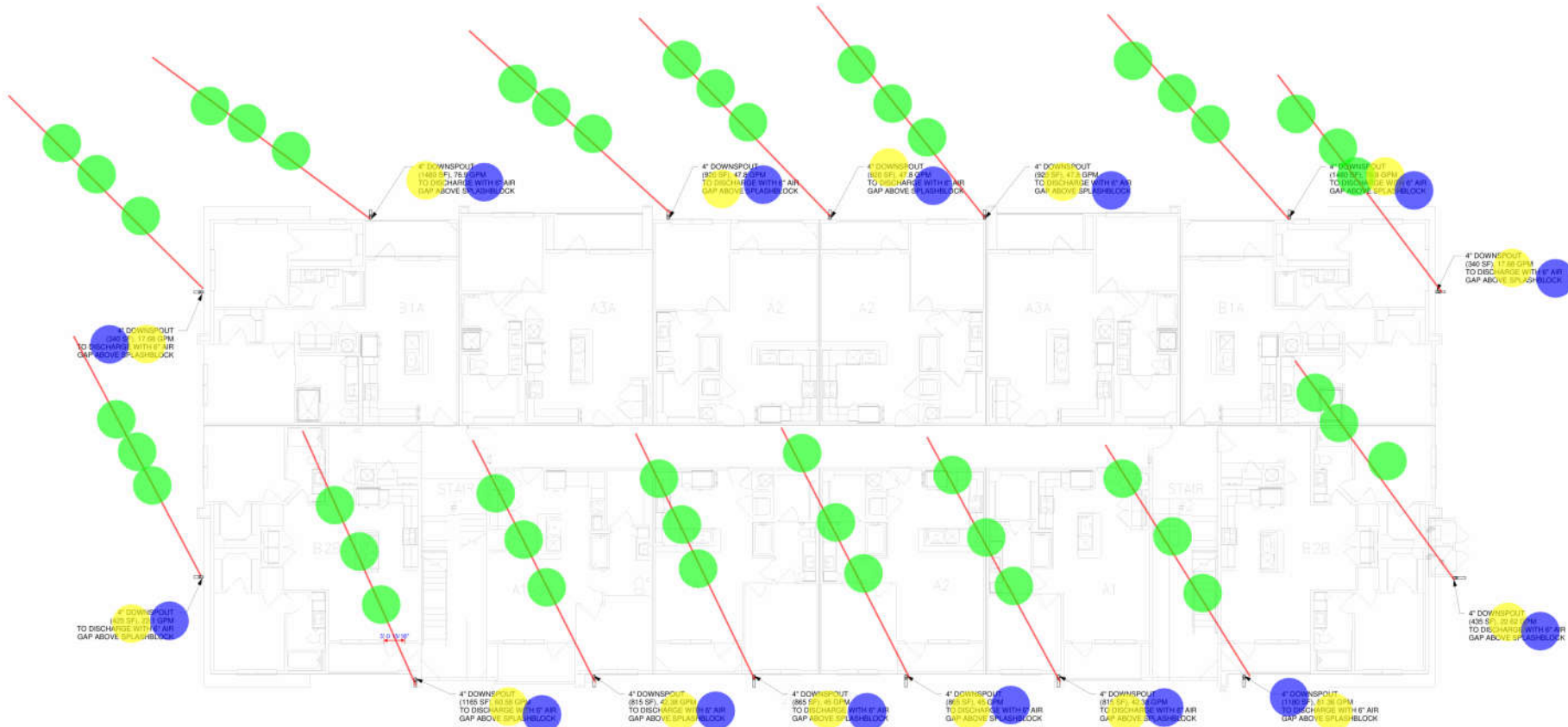
Big Valley Apartments

Plumbing - Storm  
Water - BLDG I - Level  
1

Project number 2310  
Date 02.20.2023  
Drawn by JM  
Checked by MA

P-1-27

Scale As indicated



SIMILAR BLDG A

■ 4" Dia Downspout ... 610.5 FT  
● 4" Dia Downspout S... 45.0 EA  
● Splash Block W/ 6" ... 15.0 EA  
● 4" Dia Downspout N... 15.0 EA

2/20/2024 12:15:58 PM



### GENERAL STORM WATER NOTES

1. ALL STORM WATER PIPING SHALL BE SLOPED AT A MINIMUM OF 1/8" PER FOOT UNLESS OTHERWISE NOTED.
2. PLUMBING CONTRACTOR SHALL VERIFY THE LOCATION OF ALL UTILITY CONNECTIONS, FLOW LINES AND INVERT ELEVATIONS WITH CIVIL PLANS PRIOR TO THE START OF WORK.
3. PROVIDE CLEANOUTS AT THE BOTTOM OF ALL STORM WATER STACKS AND AT EACH CHANGE IN STORM WATER DIRECTION GREATER THAN 45° PER LOCAL PLUMBING CODE.
4. PLUMBING CONTRACTOR TO MAINTAIN A MINIMUM OF 12" BELOW SLAB WITH ALL SANITARY PIPING.



www.MEPDeltaDesign.com

MEP CONSULTANT- MEP DELTA DESIGN  
PO BOX 81271  
AUSTIN TX, 78718  
(512) 215-9792

ARCHITECT - MEERS & PARTNERS  
1600 MEMORIAL DR # 100  
HOUSTON, TX 77079  
(281) 558-8787

STRUCTURAL - INTEGRITY STRUCTURAL  
12777 JONES ROAD  
HOUSTON TX, 77079  
(281) 894-7069 - Ext. 124

CIVIL ENGINEER - KIMLEY-HORN  
5301 SOUTHWEST PARKWAY, UPLANDS II, SUITE 100  
AUSTIN, TX 78735  
(512) 518-6534

#### ISSUANCES

NO.	DESCRIPTION	DATE
01	50% DD Set	05/19/2023
02	100% DD Set	06/26/2023
03	Permit Set	11/16/2023
04	Issue For GMP	02/20/2024

#### REVISIONS

NO.	DESCRIPTION	DATE

FIRM # F-15941



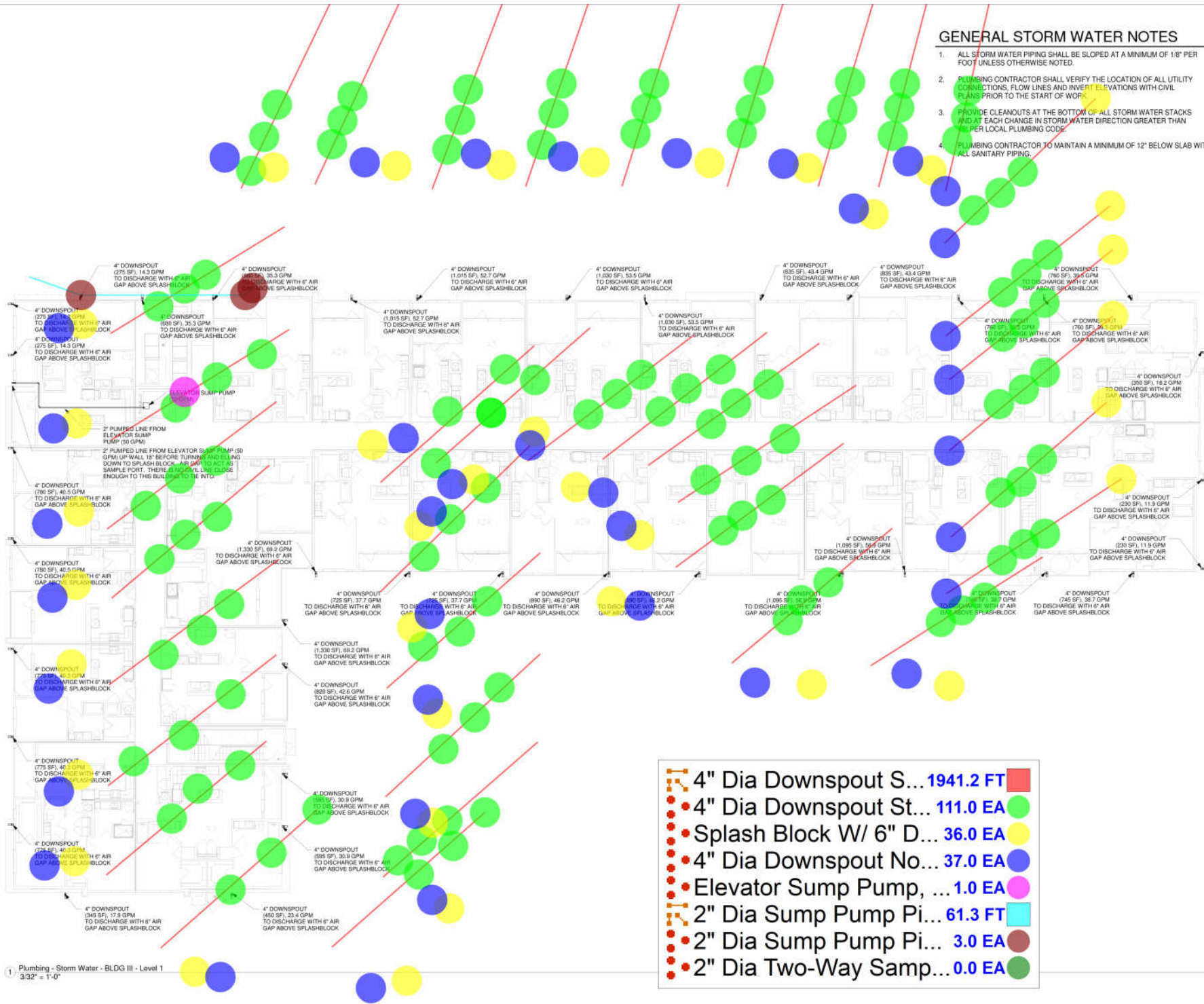
### Big Valley Apartments

### Plumbing - Storm Water - BLDG III - Level 1

Project number	2310
Date	02.20.2023
Drawn by	JM
Checked by	MA

P-1-36

Scale As indicated



4" Dia Downspout S...	1941.2 FT
4" Dia Downspout St...	111.0 EA
Splash Block W/ 6" D...	36.0 EA
4" Dia Downspout No...	37.0 EA
Elevator Sump Pump, ...	1.0 EA
2" Dia Sump Pump Pi...	61.3 FT
2" Dia Sump Pump Pi...	3.0 EA
2" Dia Two-Way Samp...	0.0 EA

1 Plumbing - Storm Water - BLDG III - Level 1  
3/32" = 1'-0"

























Key Value	Keynote Text
G	PIPE BELOW FLOOR
H01	1/2" H.W. & C.W. TAP TO KITCHEN SINK WITH OR WITHOUT DISHWASHER.
H02	1/2" C.W. TAP TO ICE MAKER BOX. TERMINATE WITH PET COCK AT 18" AFF.
H03	1/2" H.W. & C.W. TAP TO WASHER CONNECTION BOX. PROVIDE 'SIOUX CHIEF' OR EQUAL SHOCK ABSORBERS PRIOR TO CONNECTION.
H04	1/2" H.W. & C.W. TAP TO LAV(S).
H05	1/2" C.W. TAP TO W.C.
H06	1/2" H.W. & C.W. TAP TO TUB OR SHOWER.
H07	WATER HEATER
H08	GATE VALVE CUT-OFF
H09	WATER METER
H10	TO C.W. RISER

**DWELLING UNIT DW GENERAL NOTES:**

1. PROVIDE WATER HAMMER ARRESTERS ON HW AND CW CONNECTIONS AT CLOTHES WATER CONNECTION BOX AND ALL FAST-CLOSING VALVES.
2. PROVIDE CUT-OFFS AT EACH FIXTURE.
3. RUN HORIZONTAL DWELLING UNIT DOMESTIC WATER DISTRIBUTION PIPING FOR MULTI-FLOOR BUILDINGS ABOVE CEILING OF EACH UNIT; BELOW FLOOR FOR TOP LEVEL UNITS. NO DOMESTIC PIPING WITHIN THE ATTIC SPACE.



www.MEPDeltaDesign.com

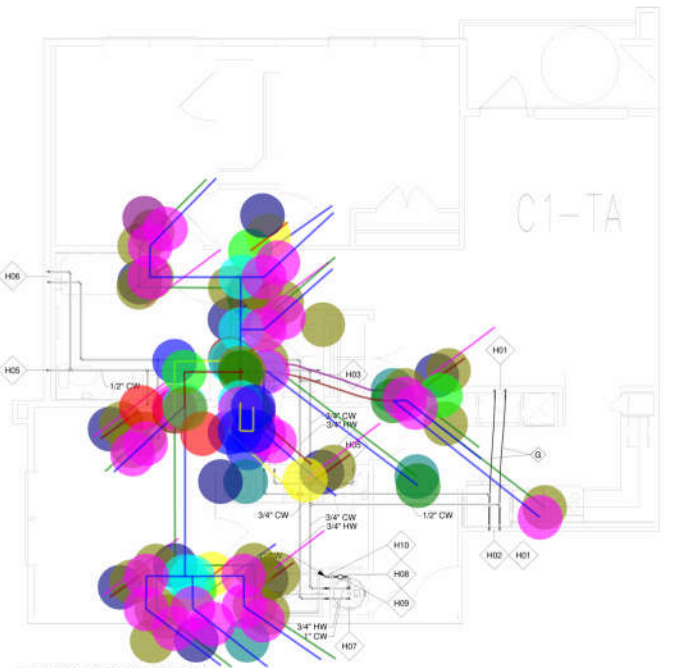
MEP CONSULTANT- MEP DELTA DESIGN  
PO BOX 81271  
AUSTIN TX, 78718  
(512) 215-9792

ARCHITECT - MEERS & PARTNERS  
1600 MEMORIAL DR # 100  
HOUSTON, TX 77079  
(281) 558-8787

STRUCTURAL - INTEGRITY STRUCTURAL  
12777 JONES ROAD  
HOUSTON TX, 77070  
(281) 884-7069 - Ext. 124

CIVIL ENGINEER - KIMLEY-HORN  
5301 SOUTHWEST PARKWAY, UPLANDS II, SUITE 100  
AUSTIN, TX 78735

NO.	DESCRIPTION	DATE
01	2.0 EA 3/4" SH	05-19-2023
02	2.0 EA 3/4" SH	06-26-2023
03	2.0 EA 3/4" SH	11-16-2023
04	6.0 EA GMP	02-20-2024
05	2.0 EA	
06	240.4 FT	
07	48.0 EA	
08	12.0 EA	
09	16.6 FT	
10	4.0 EA	
11	4.0 EA	
12	2.0 EA	
13	2.0 EA	
14	2.0 EA	
15	2.0 EA	
16	2.0 EA	
17	2.0 EA	
18	2.0 EA	
19	2.0 EA	
20	2.0 EA	
21	2.0 EA	
22	2.0 EA	
23	2.0 EA	
24	2.0 EA	
25	2.0 EA	
26	2.0 EA	
27	2.0 EA	
28	2.0 EA	
29	2.0 EA	
30	2.0 EA	
31	2.0 EA	
32	2.0 EA	
33	2.0 EA	
34	2.0 EA	
35	2.0 EA	
36	2.0 EA	
37	2.0 EA	
38	2.0 EA	
39	2.0 EA	
40	2.0 EA	
41	2.0 EA	
42	2.0 EA	
43	2.0 EA	
44	2.0 EA	
45	2.0 EA	
46	2.0 EA	
47	2.0 EA	
48	2.0 EA	
49	2.0 EA	
50	2.0 EA	
51	2.0 EA	
52	2.0 EA	
53	2.0 EA	
54	2.0 EA	
55	2.0 EA	
56	2.0 EA	
57	2.0 EA	
58	2.0 EA	
59	2.0 EA	
60	2.0 EA	
61	2.0 EA	
62	2.0 EA	
63	2.0 EA	
64	2.0 EA	
65	2.0 EA	
66	2.0 EA	
67	2.0 EA	
68	2.0 EA	
69	2.0 EA	
70	2.0 EA	
71	2.0 EA	
72	2.0 EA	
73	2.0 EA	
74	2.0 EA	
75	2.0 EA	
76	2.0 EA	
77	2.0 EA	
78	2.0 EA	
79	2.0 EA	
80	2.0 EA	
81	2.0 EA	
82	2.0 EA	
83	2.0 EA	
84	2.0 EA	
85	2.0 EA	
86	2.0 EA	
87	2.0 EA	
88	2.0 EA	
89	2.0 EA	
90	2.0 EA	
91	2.0 EA	
92	2.0 EA	
93	2.0 EA	
94	2.0 EA	
95	2.0 EA	
96	2.0 EA	
97	2.0 EA	
98	2.0 EA	
99	2.0 EA	
100	2.0 EA	



2 Plumbing - UNIT Level - UNIT C1A  
1/4" = 1'-0"



1 Plumbing - UNIT Level - UNIT C1  
1/4" = 1'-0"

- B1 - 1" Dia CW Pipe
- B1 - 1" Dia CW Pipe 90 Deg Elbow
- B1 - 1" / 3/4" Dia CW Pipe Tee
- B1 - 1" / 3/4" Dia CW Pipe Reducer
- B1 - 3/4" Dia CW Pipe
- B1 - 3/4" Dia CW Pipe Double Tee
- B1 - 3/4" / 1/2" Dia CW Pipe Reducer
- B1 - 1" Dia Gate Valve Cut-Off
- B1 - 1" Dia CW Pipe Transition, CPVC To Copper
- B1 - Water Meter
- B1 - Water Heater
- B1 - 3/4" Dia CW Pipe 90 Deg Elbow
- B1 - H02, Ice Maker Box
- B1 - 1/2" Dia CW Pipe
- B1 - 1/2" Dia CW Pipe 90 Deg Elbow
- B1 - 1/2" Dia CW Pipe Tee
- B1 - BG - 1/2" Dia CW Pipe
- B1 - BG - 1/2" Dia CW Pipe 90 Deg Elbow
- B1 - H04
- B1 - H05
- B1 - H06, Shower
- B1 - H06, Tub
- B1 - H03, Washer Connection Box
- B1 - H01, Kitchen Sink W/ Dishwasher
- B1 - 3/4" Dia HW pipe
- B1 - 3/4" Dia HW pipe 90 Deg Elbow
- B1 - 3/4" / 1/2" Dia HW pipe Tee
- B1 - 3/4" Dia HW pipe Double Tee
- B1 - 3/4" / 1/2" Dia HW pipe Reducer
- B1 - 1/2" Dia HW pipe
- B1 - 1/2" Dia HW Pipe 90 Deg Elbow
- B1 - 1/2" Dia HW Pipe Tee
- B1 - BG - 1/2" Dia HW Pipe
- B1 - BG - 1/2" Dia HW Pipe 90 Deg Elbow
- B1 - 3" Dia SS Pipe
- B1 - 3" Dia SS Pipe 90 Deg Elbow
- B1 - 3" Dia SS Pipe 45 Deg Elbow
- B1 - 2" Dia Vent Pipe
- B1 - 1-1/2" Dia Vent Pipe
- B1 - 2" Dia SS Pipe
- B1 - 2" Dia SS Pipe 45 Deg Elbow
- B1 - 2" Dia SS Pipe 45 Deg Elbow
- B1 - 2" Dia SS Pipe 90 Deg Elbow

SIMILAR: C1a, C1b

**Big Valley Apartments**

**Plumbing - UNIT C1**

Project number 2310  
Date 02.20.2023  
Drawn by JM  
Checked by MA

**P-4-08**

Scale 1/4" = 1'-0"

2/20/2024 12:18:53 PM



